

Windows Vista and Windows 7 Users:

Installing TR-5 Parameter Interface

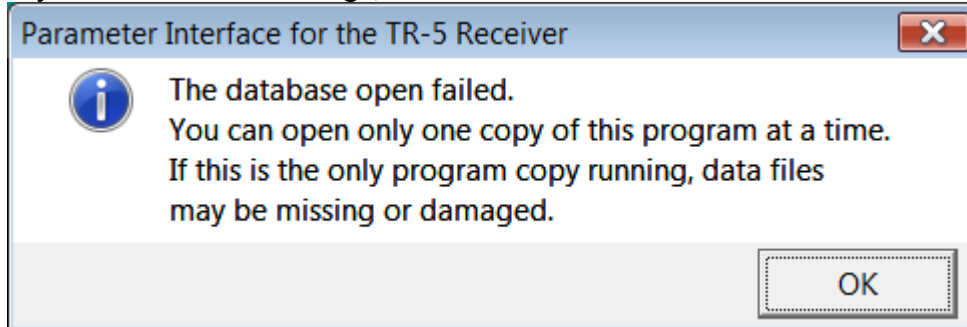
From the root folder of the installation CD for TR-5, please run the file “**setup.exe**” to start the installation. Do **NOT** run the file “TR-5 Parameter Interface.msi” directly, since this may prevent the TR-5 Parameter Interface from running once the installation completes. When the installation wizard launches, please choose the option to install this application for “**Anyone who uses this computer (all users)**” and the “**Typical**” installation (these are the default selections). If you think you may have installed TR-5 with the wrong settings (or you ran the msi file directly instead of setup.exe), please uninstall the program and then follow these directions to install the program correctly.

Configuring TR-5 Parameter Interface

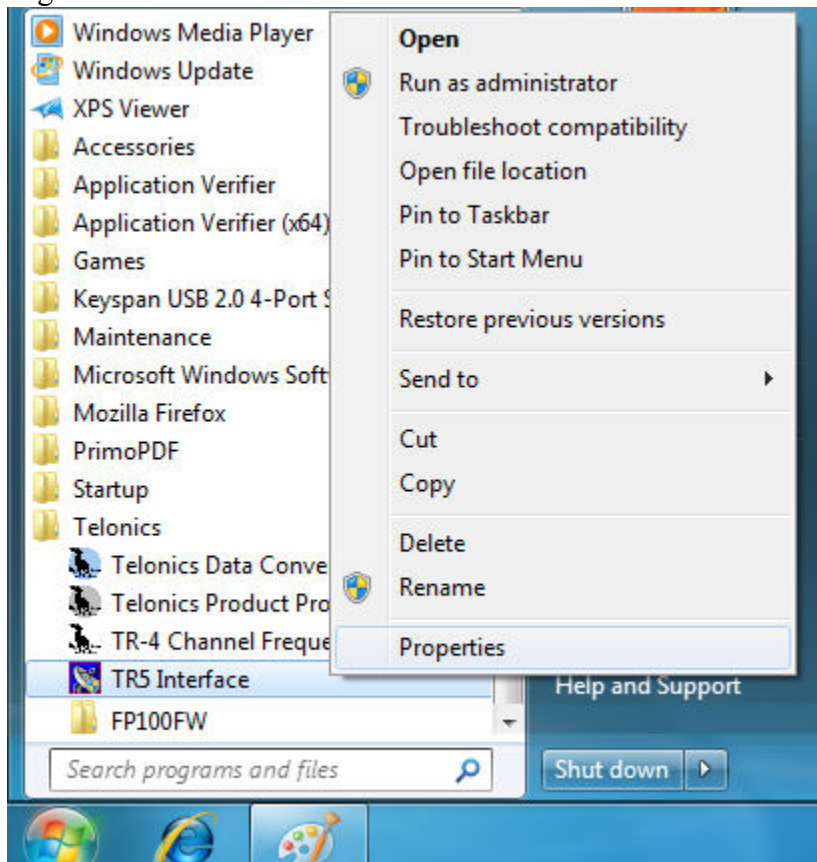
To use the TR-5 Parameter Interface on Windows Vista or Windows 7, you will need to run the program as an administrator or make changes to the Borland Database Engine (installed as part of TR-5 Parameter Interface). The first part of this document describes how to configure TR-5 Parameter Interface to run as an administrator. **Option 1** is the simplest way to get the program up and running. If your network administrator will not give you administrator privileges, your administrator will need to follow the steps under **Option 2** to configure the program.

Option 1 (Preferred Choice): “Run as administrator”

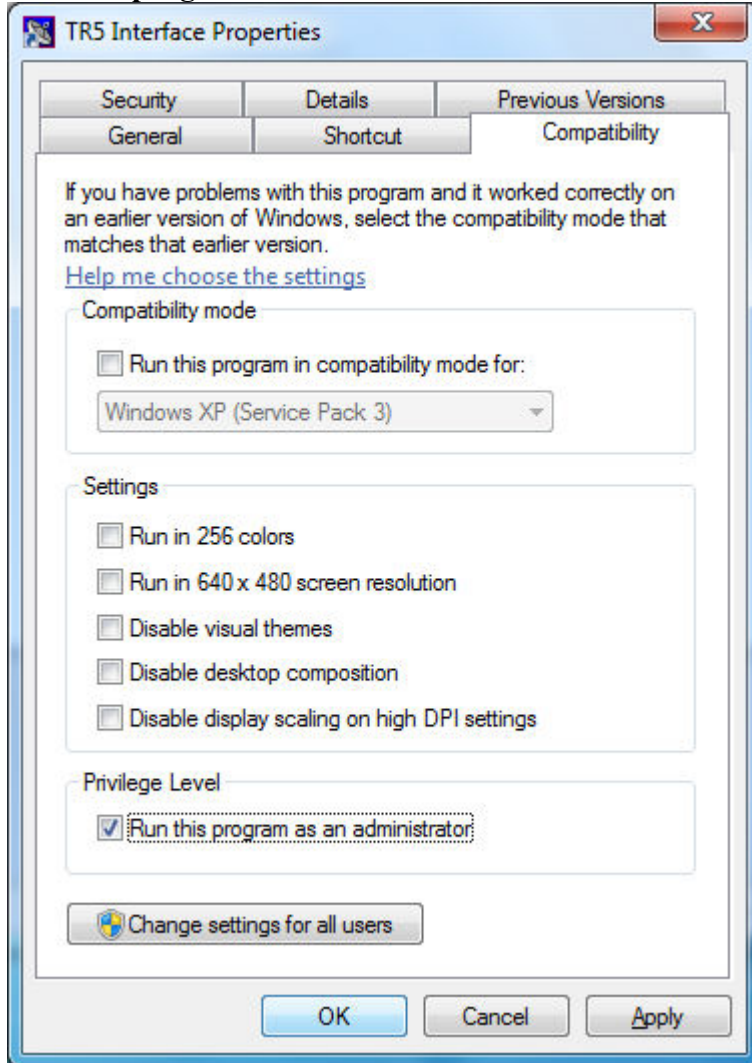
You may see the following error message when you attempt to start TR-5 Parameter Interface. If you see this error message, TR-5 Parameter Interface must be run as an administrator.



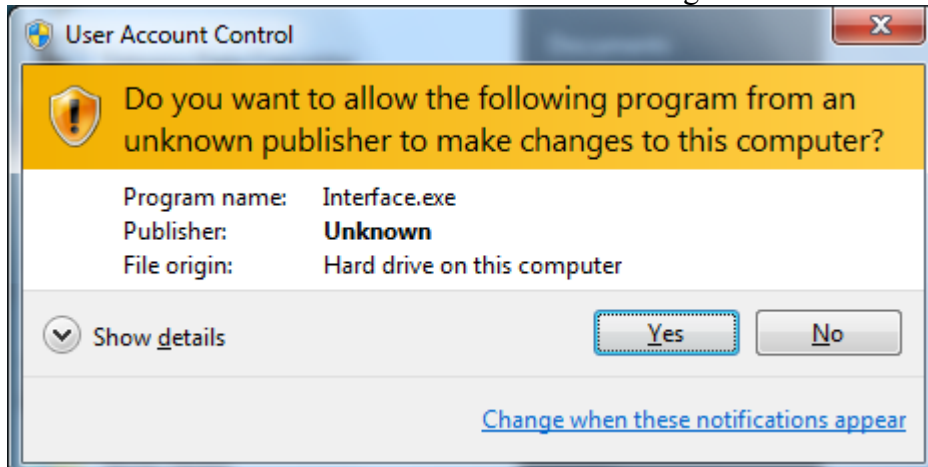
Right-click the **TR-5 Interface** shortcut from the Start Menu and choose **Properties**.



Under the **Compatibility** tab in the **Properties** window, check the option that says **Run this program as an administrator** and click the **OK** button.



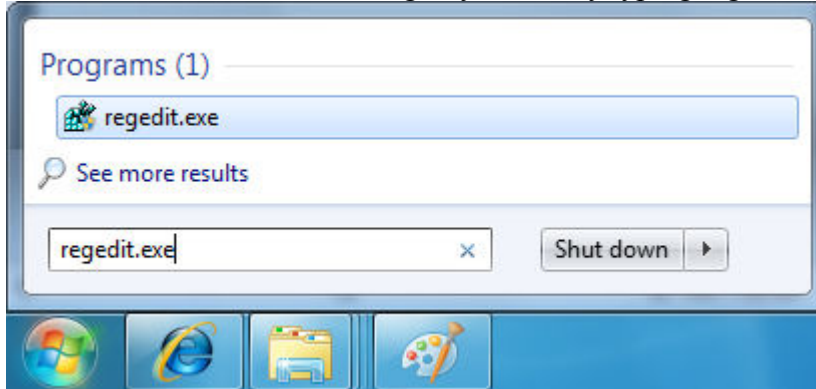
Start the **TR-5 Interface** from the Start Menu. Before the program starts, you should see a **User Account Control** window such as the following. Click **Yes** to start the program.



Option 2: Configure Borland Database Engine for Regular Users

Modify Registry Permissions for Borland Database Engine

As an administrator, launch Registry Editor by typing regedit.exe in the Start Menu Search Box.



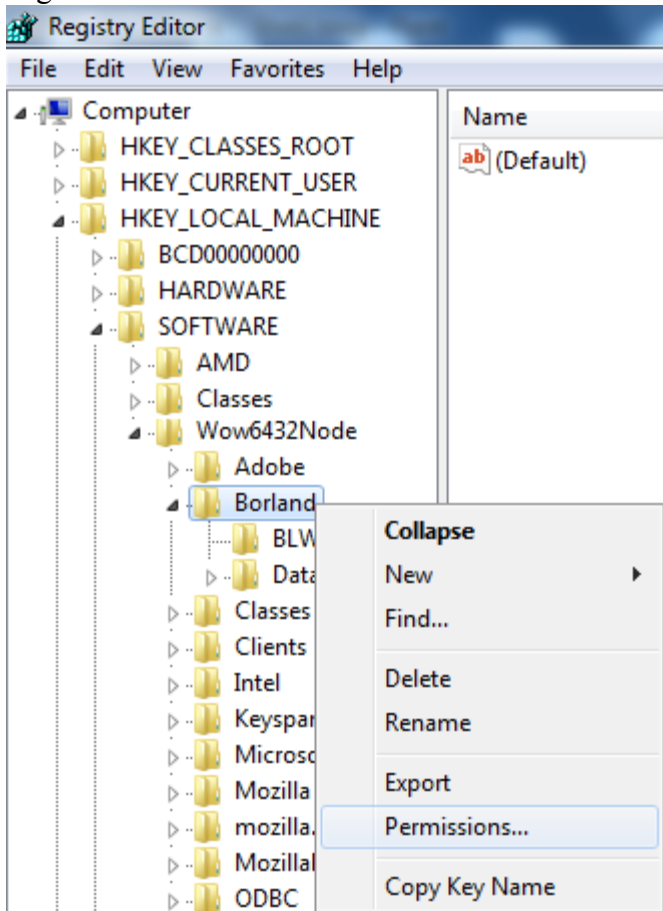
Expand the HKEY_LOCAL_MACHINE branch.

Expand the SOFTWARE branch.

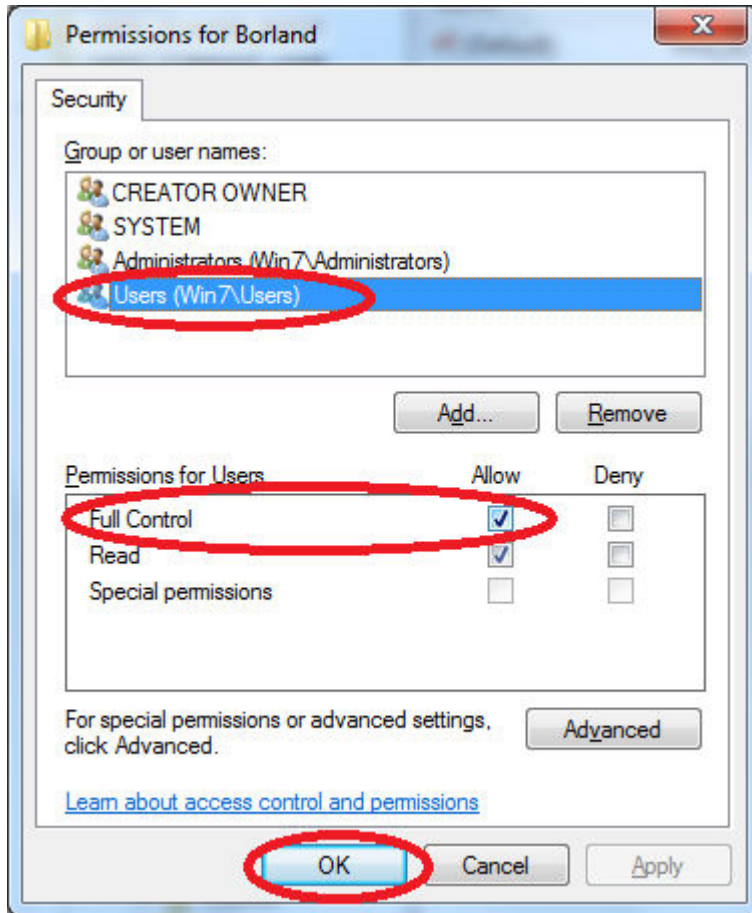
Expand the Wow6432Node branch if your PC is running a 64-bit version of Windows 7.

Scroll to the Borland folder. On 32-bit versions of Windows, it will be listed directly under the SOFTWARE branch. On 64-bit versions of Windows, it will be under Wow6432Node.

Right-click on Borland and select "Permissions...".



Select “Users (Win7\Users)” from the “Group or user names” list.
Under “Type of Access”, select “Full Control” and Click OK to close the window.

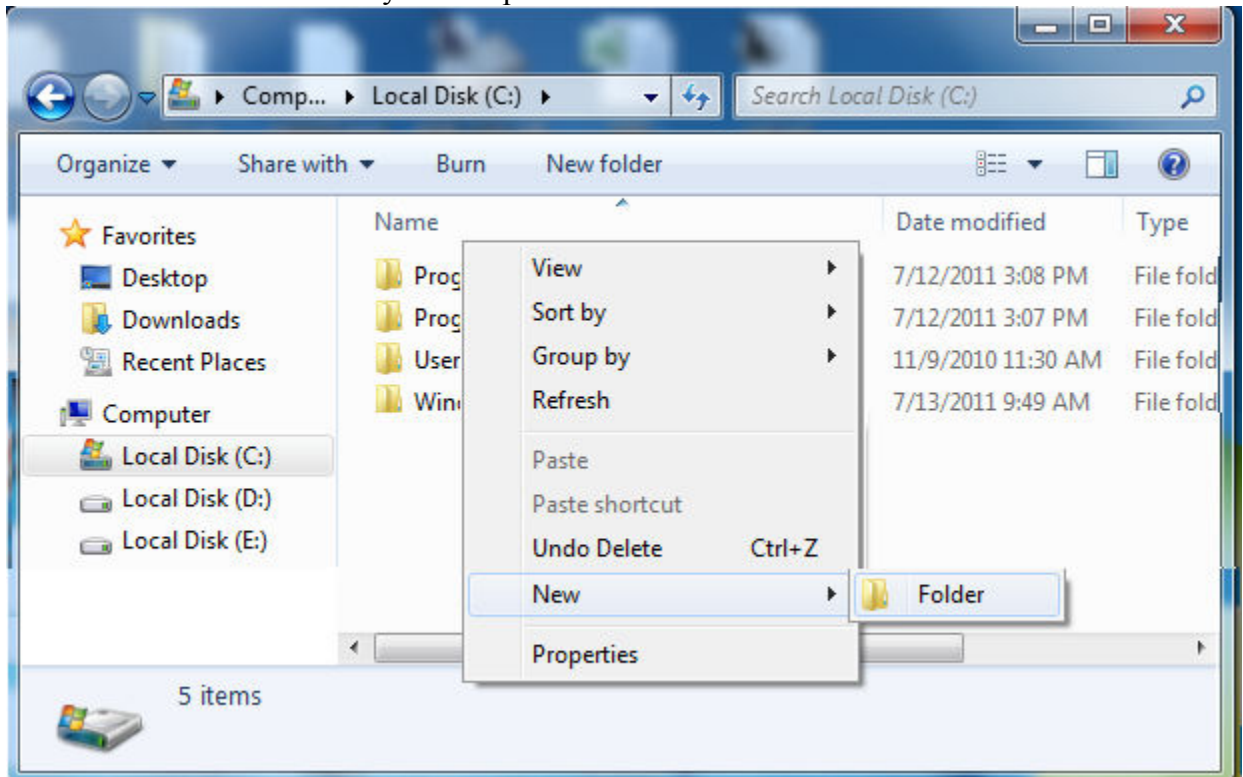


Close the Registry Editor.

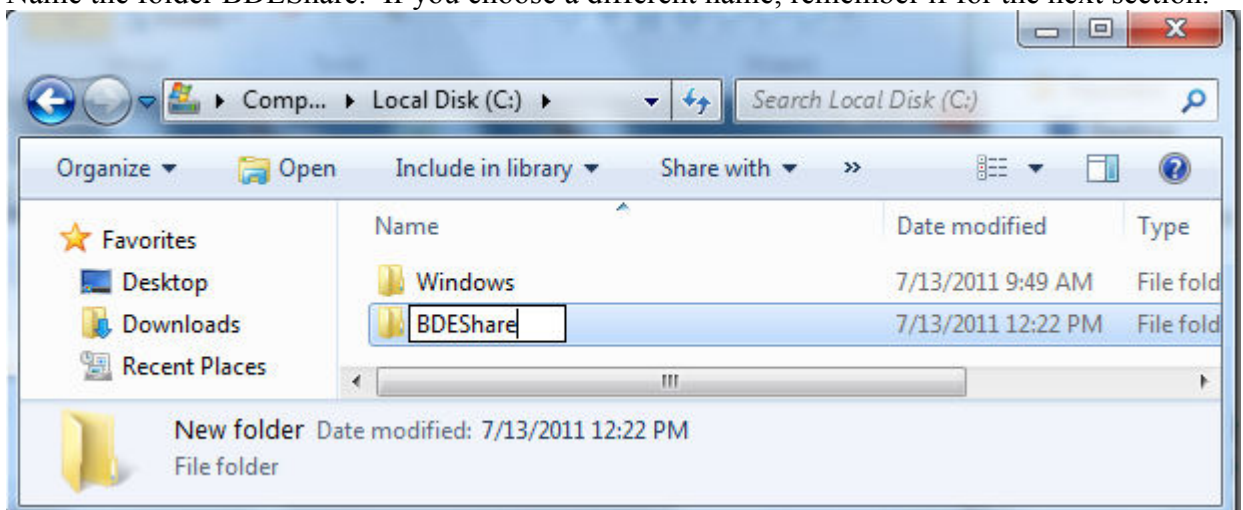
Create Folder to Hold Data for Borland Database Engine

By default, Borland Database Engine stores files in the root of drive C. Windows 7 does not permit programs to create or modify files in this location. This section describes how to create a new folder to house Borland files. The next section then explains how to configure Borland to use this new folder.

Browse to root of drive C on your computer. Create a new folder to house Borland files



Name the folder BDEShare. If you choose a different name, remember it for the next section.

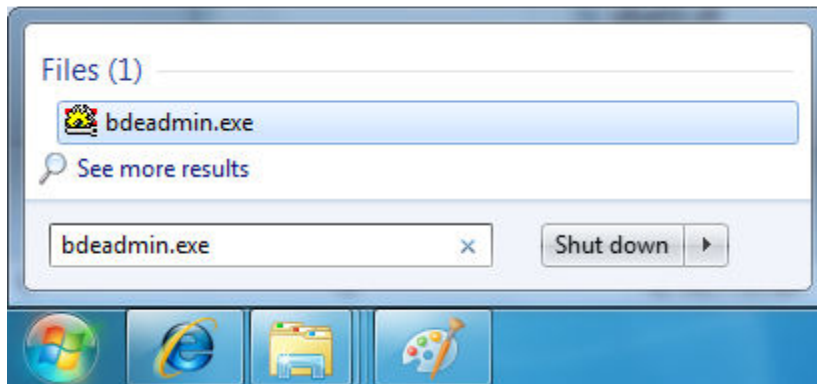


Configure Borland to Store Files in the New Folder

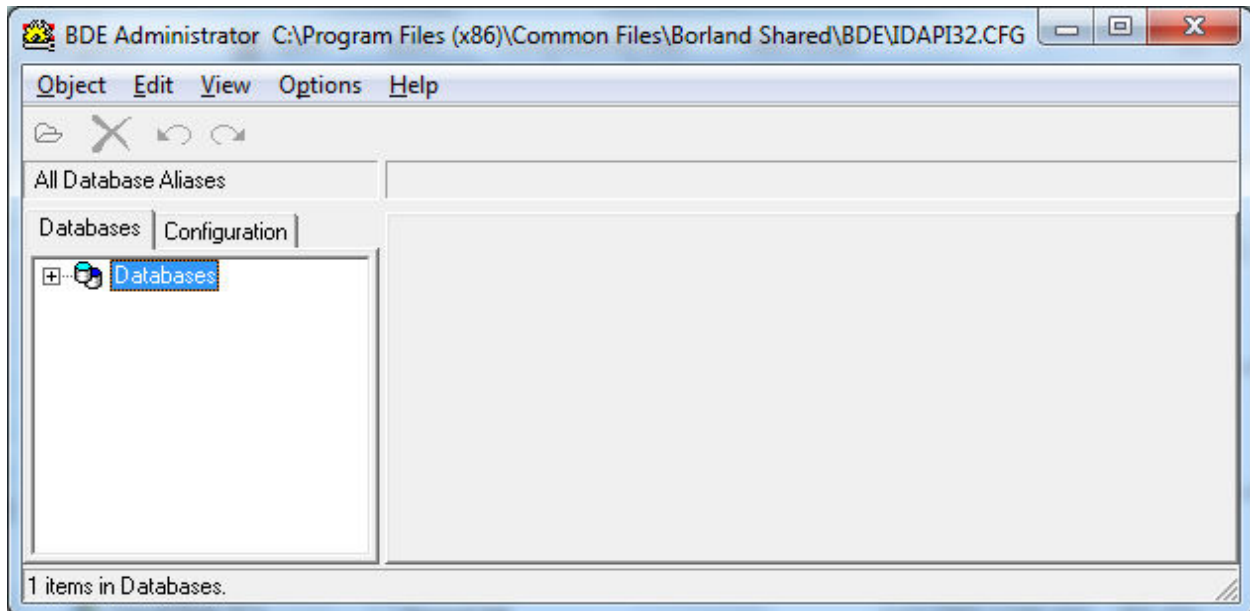
Start the Borland Database Engine by typing bdeadmin.exe in the Start Menu Search Box. You could also start the program by browsing to it on your PC and double clicking it. This program is typically installed in one of these locations:

C:\Program Files\Common Files\Borland Shared\BDE

C:\Program Files (x86)\Common Files\Borland Shared\BDE



When the program starts, the “Databases” tab may be selected. Click the “Configuration” tab so that it is selected.

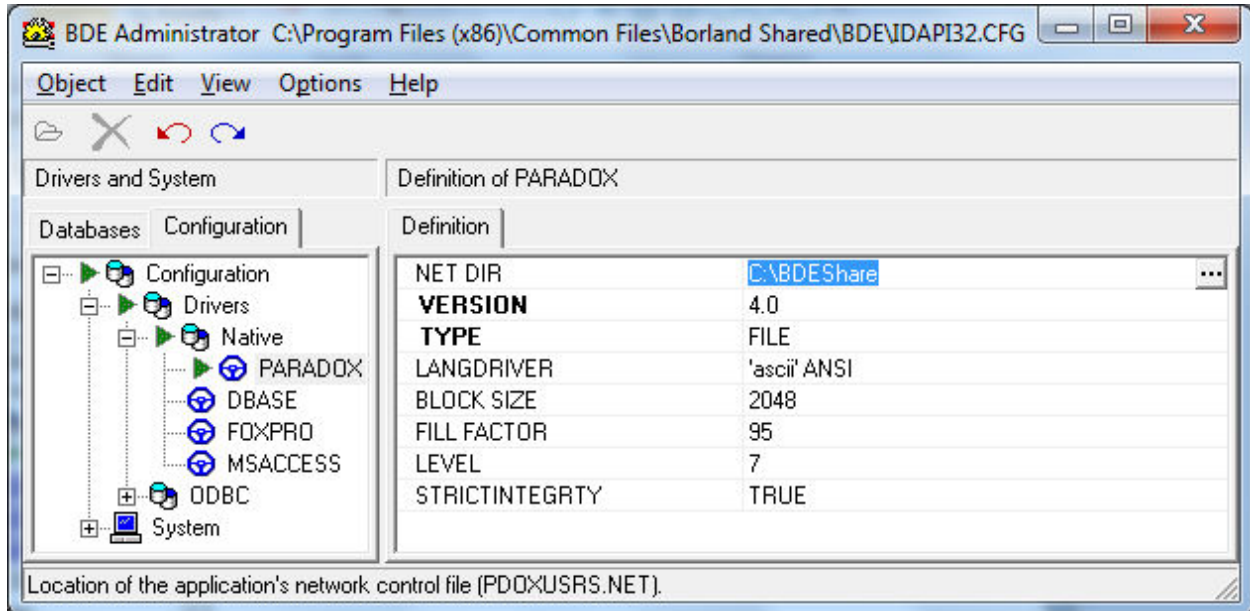


Expand the Drivers branch.

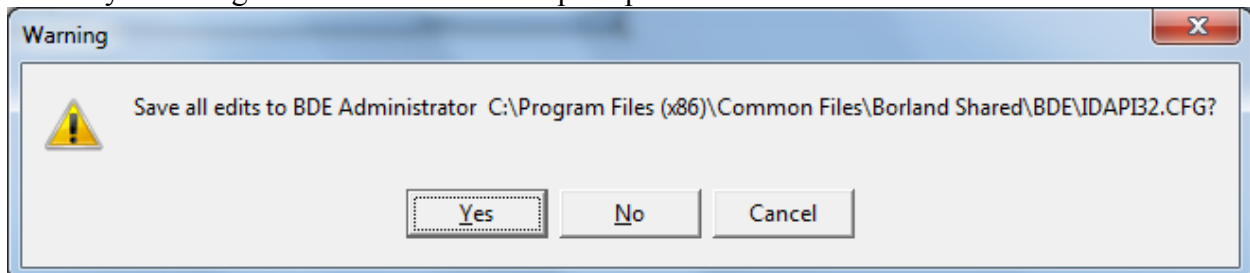
Expand the Native Branch.

Click on the PARADOX attribute.

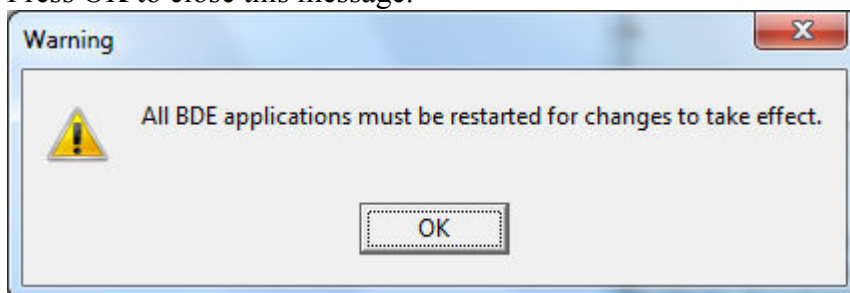
Change the “NET DIR” setting from “C:\” to “C:\BDEShare” (or the name you selected).



Close the BDE Administrator. When you attempt to close the program, you should see a prompt to save your changes. Click “Yes” on that prompt.



After saving your changes, you should see the following prompt before the program closes. Press OK to close this message.



The TR-5 Parameter Interface should now be configured to run on your PC from regular (non-administrator) accounts.